



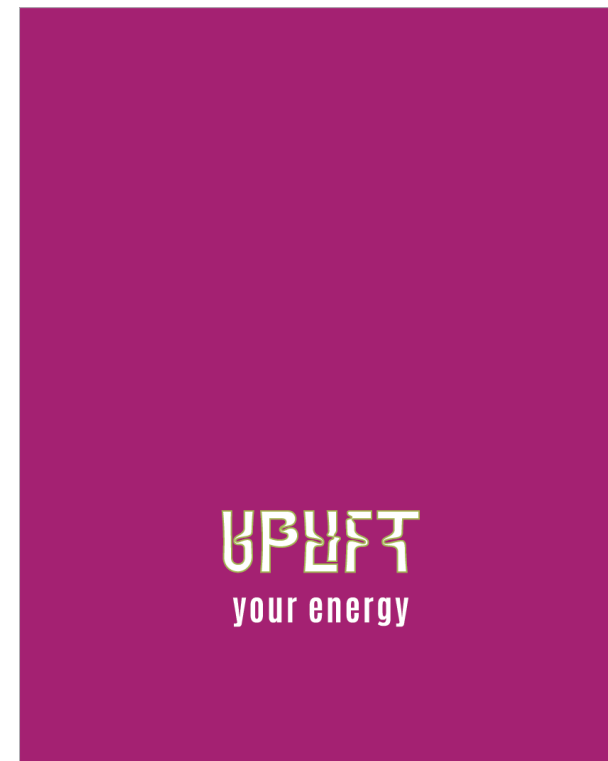
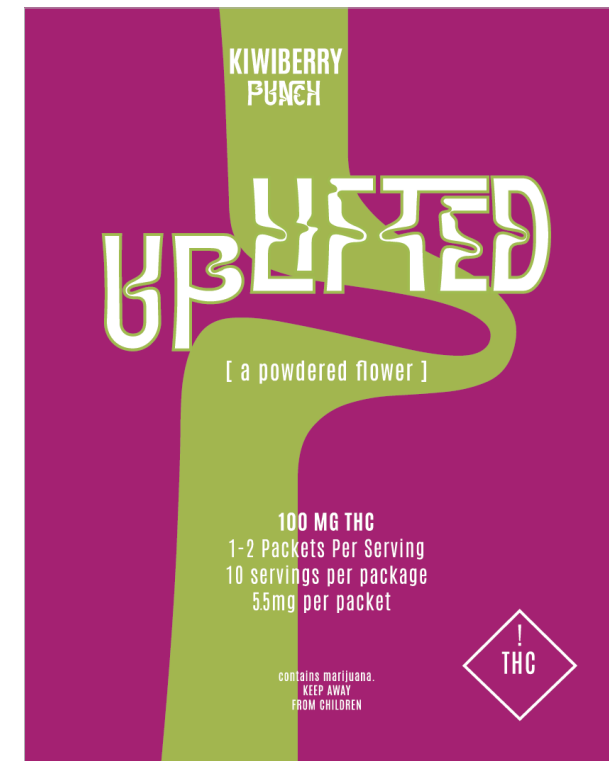
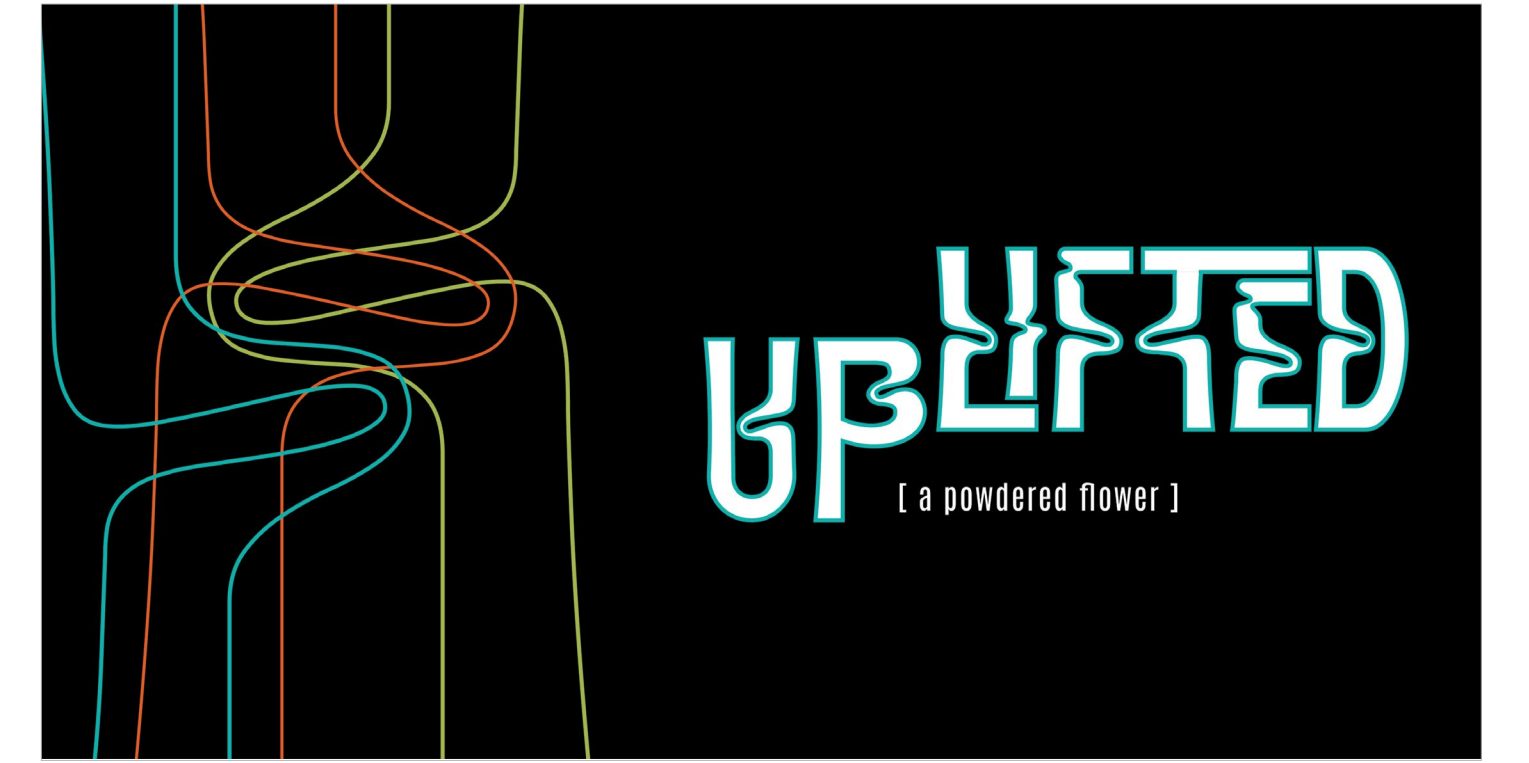
# Design Portfolio

by Caylie Jo Ann Gronwold



**Brand Design**

# Uplifted Package Design & Brand Identity Presentation



twice 3 things | brand position

target  
 - frame of reference (what's the person?)  
 - most competing (what's the thing people are doing?)

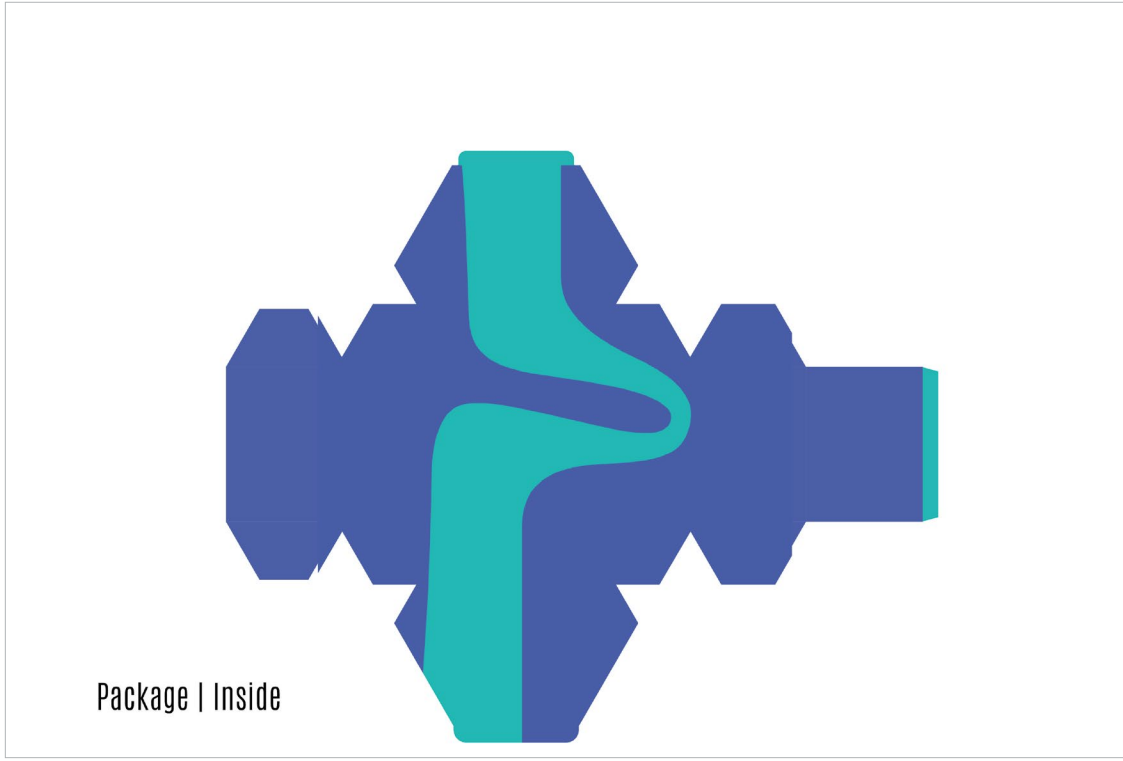
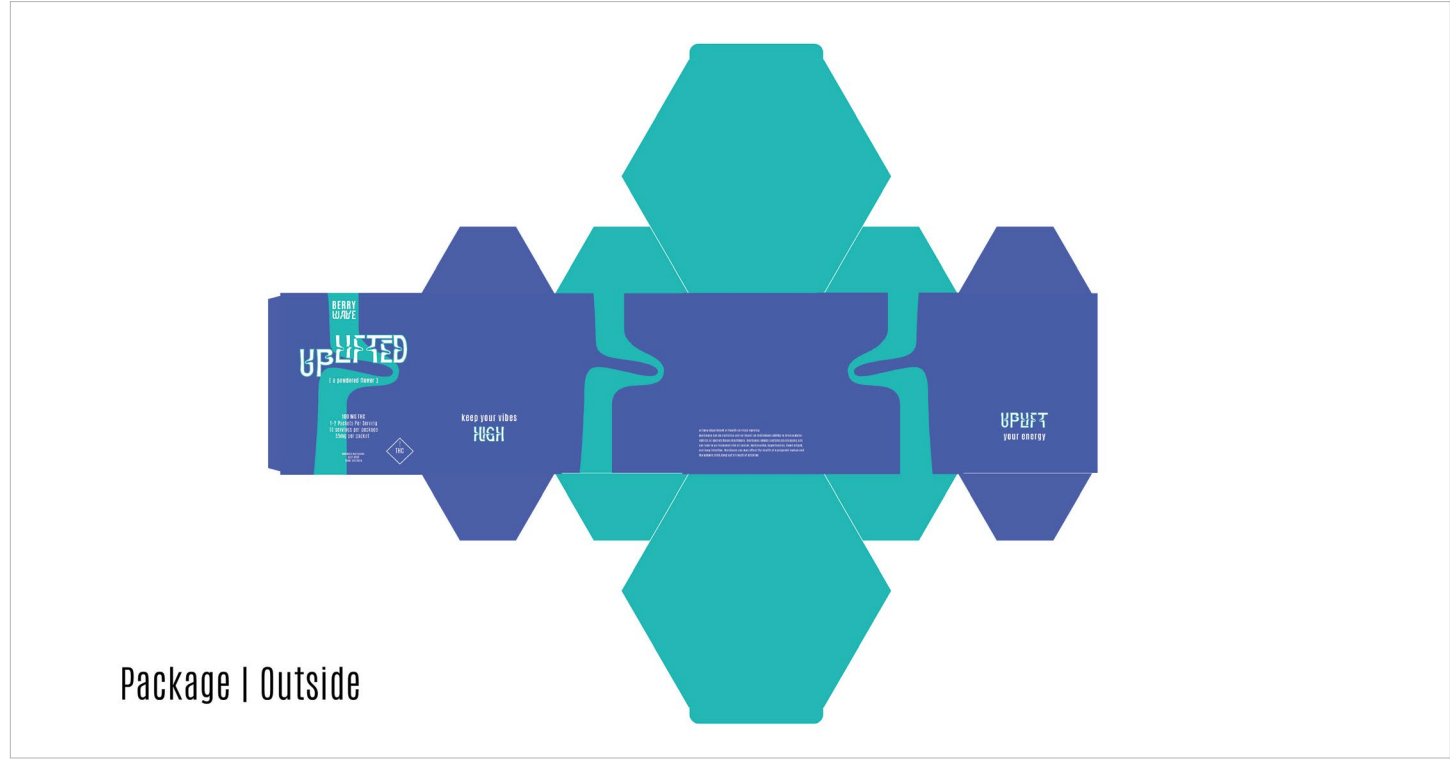
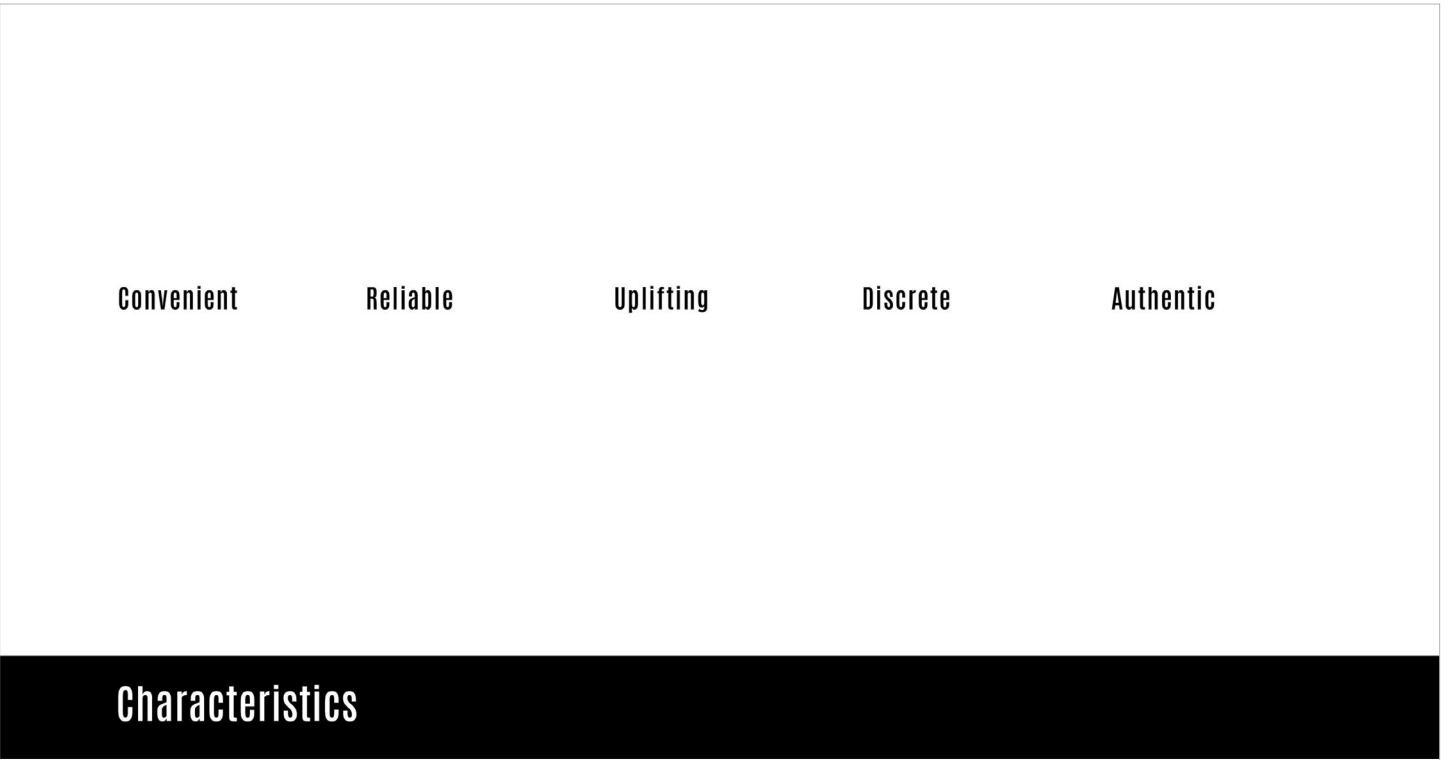
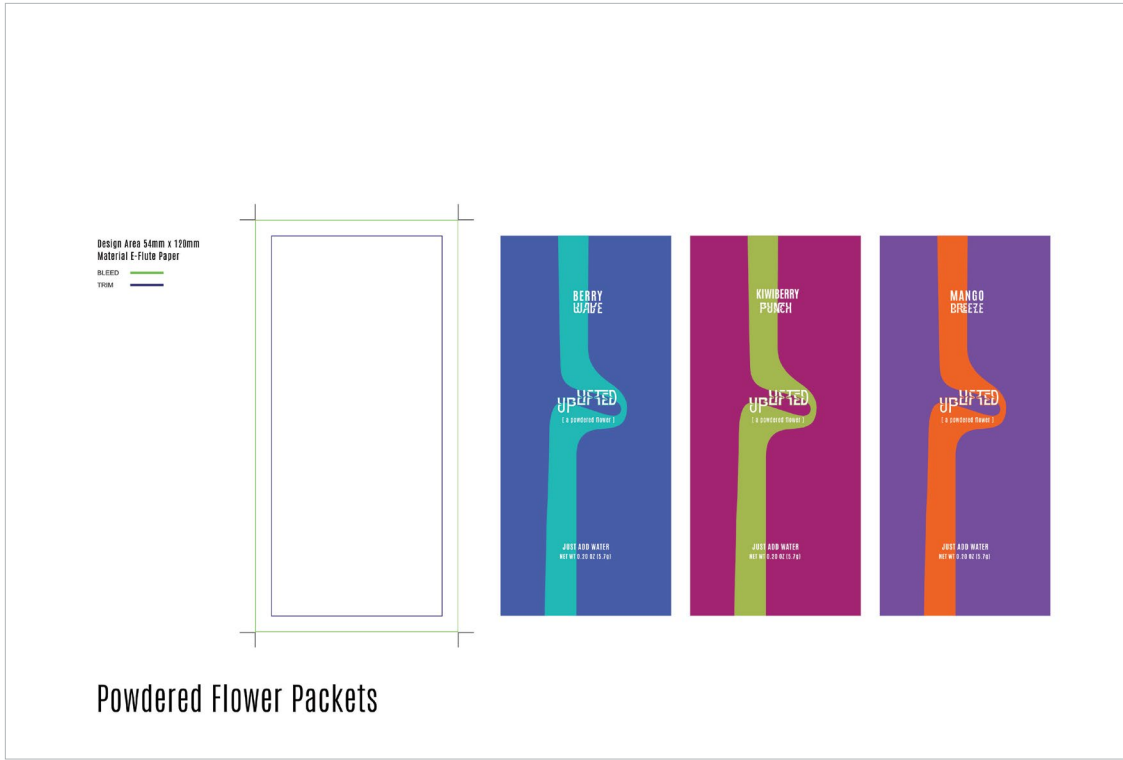
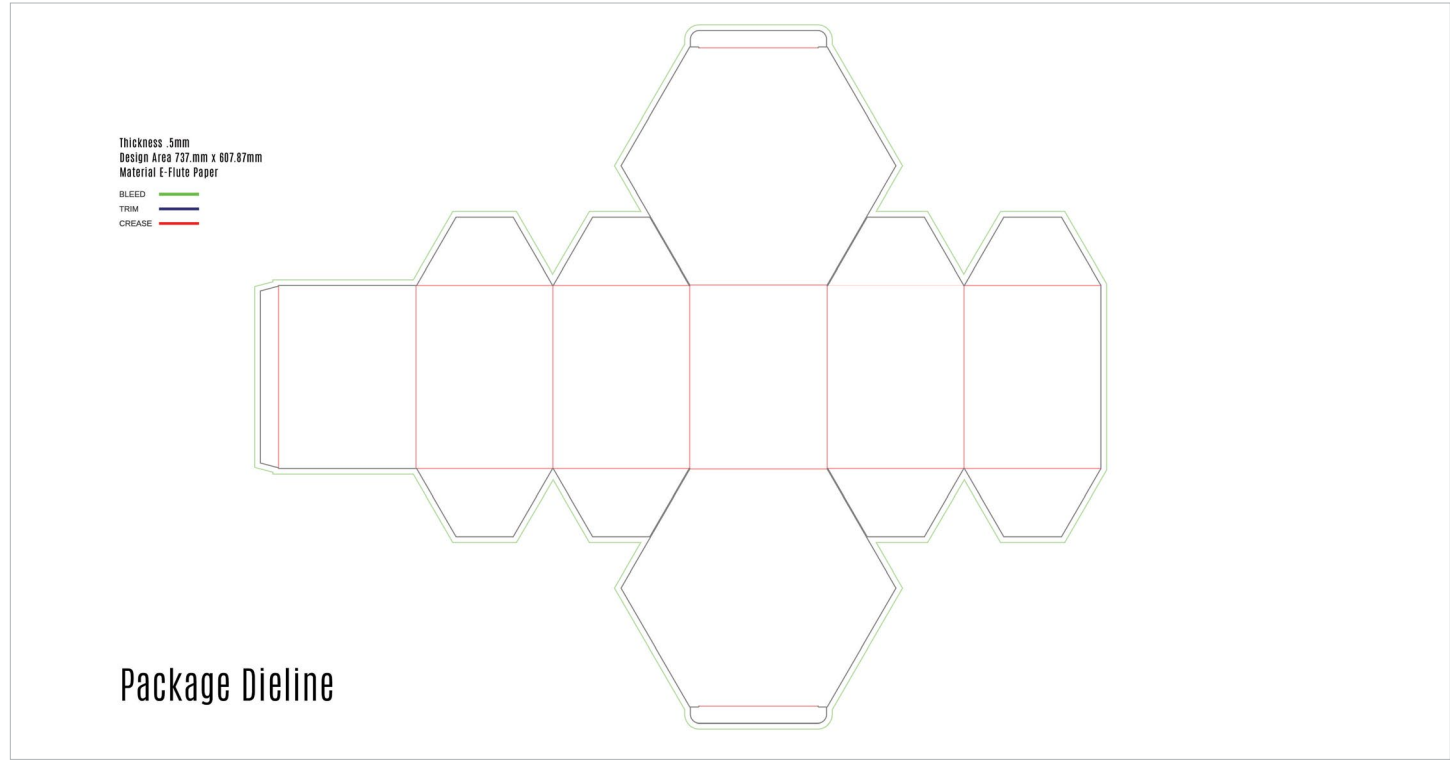
target audience  
 - millennials  
 - Gen Z  
 - Gen X  
 - baby boomers  
 - elderly  
 - young adults  
 - parents  
 - young adults  
 - elderly  
 - artists  
 - poets  
 - creatives  
 - dads  
 - moms  
 - downers

competitors  
 - Kief  
 - Cali  
 - Wala  
 - White  
 - Tonic  
 - ...

target audience is anyone 21 and up looking to elevate their high

a portable and discrete way to consume THC

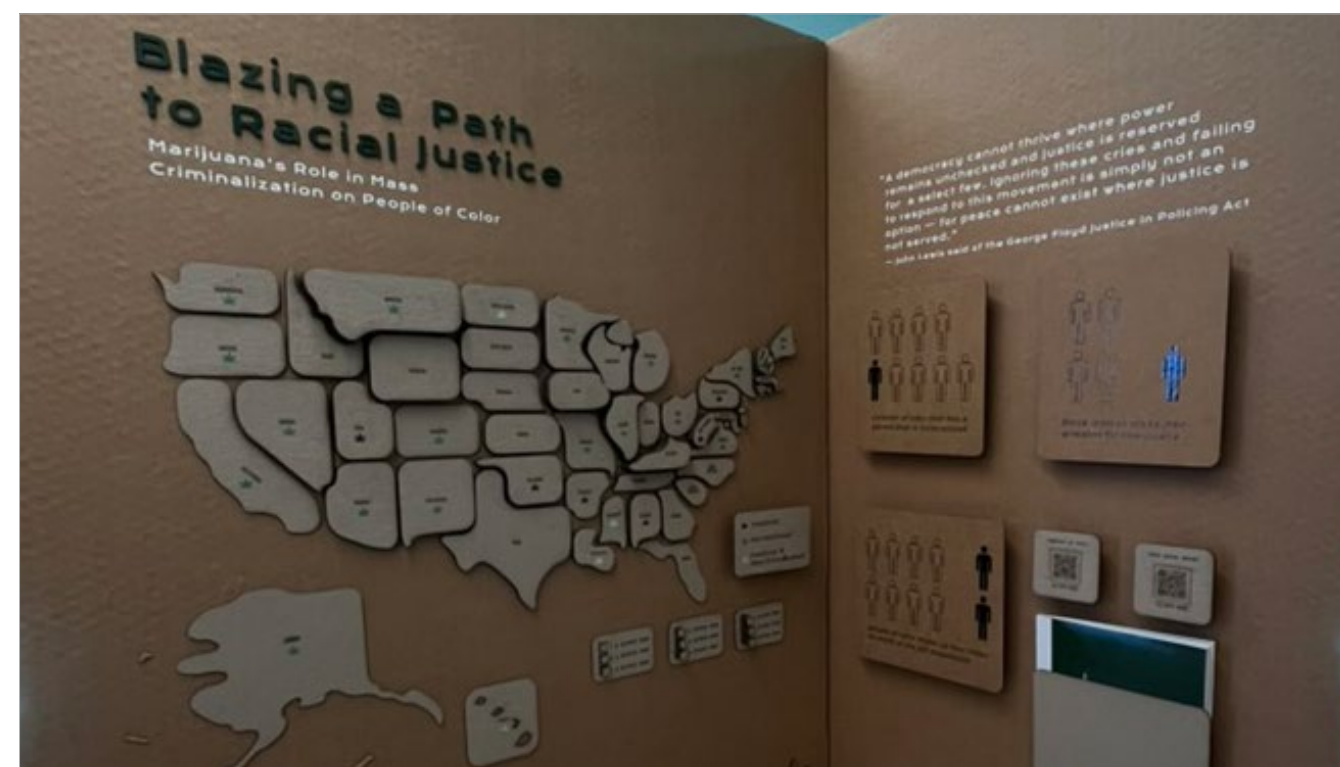
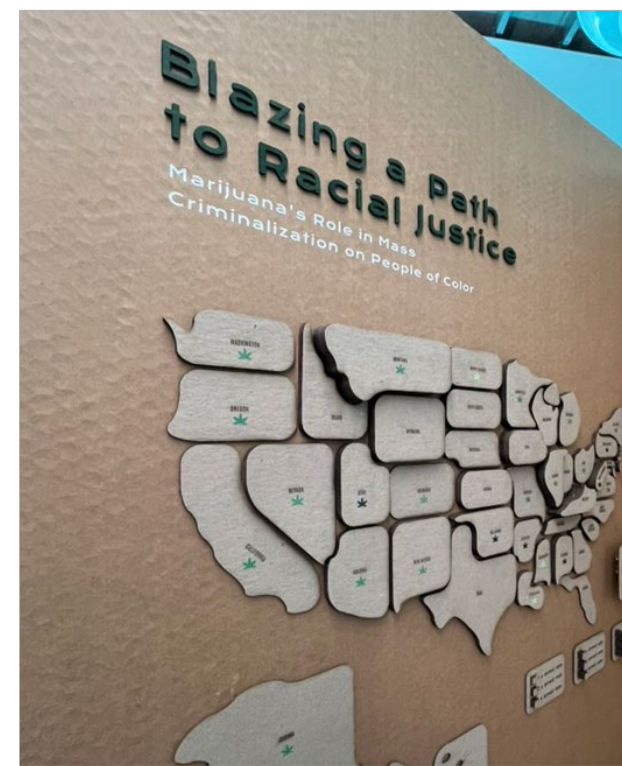
**Brand Positioning | Objectives**



# Social Issue: Racial Bias in Marijuana Arrests

## Senior Capstone: Book, Exhibit, & Clock Design

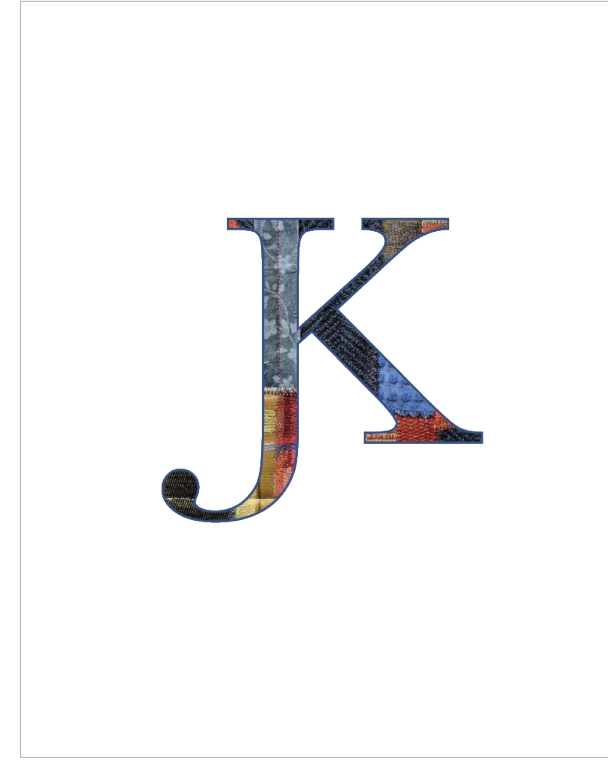
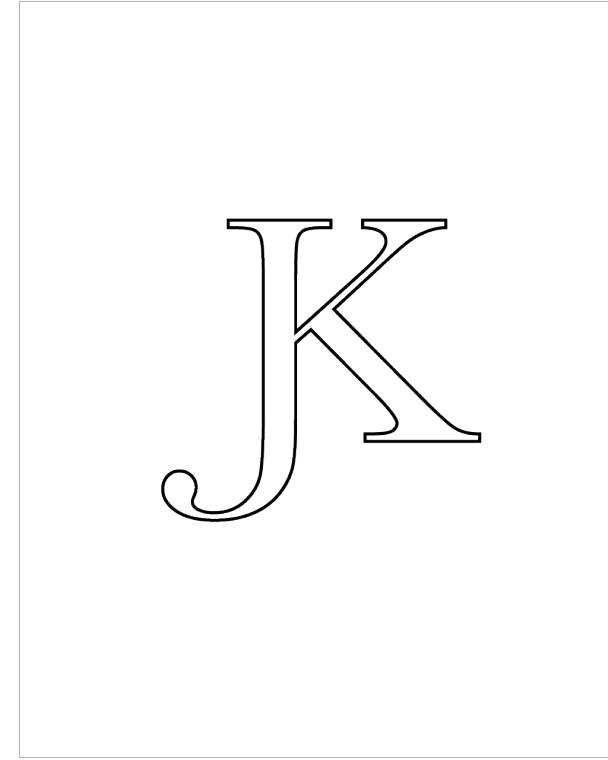




**Jolly Cannabis**  
Package Die-Line Design

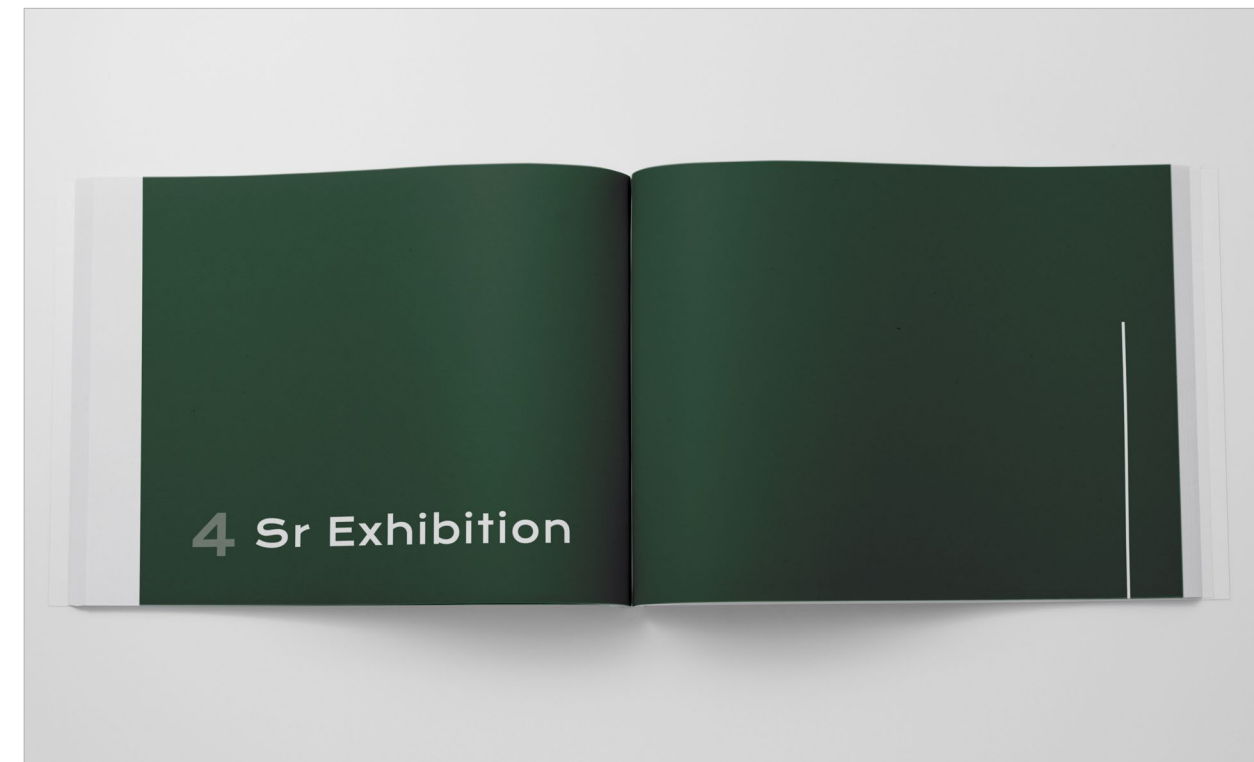


**Jay & Kai Collective**  
Vintage Clothing Re-Sell

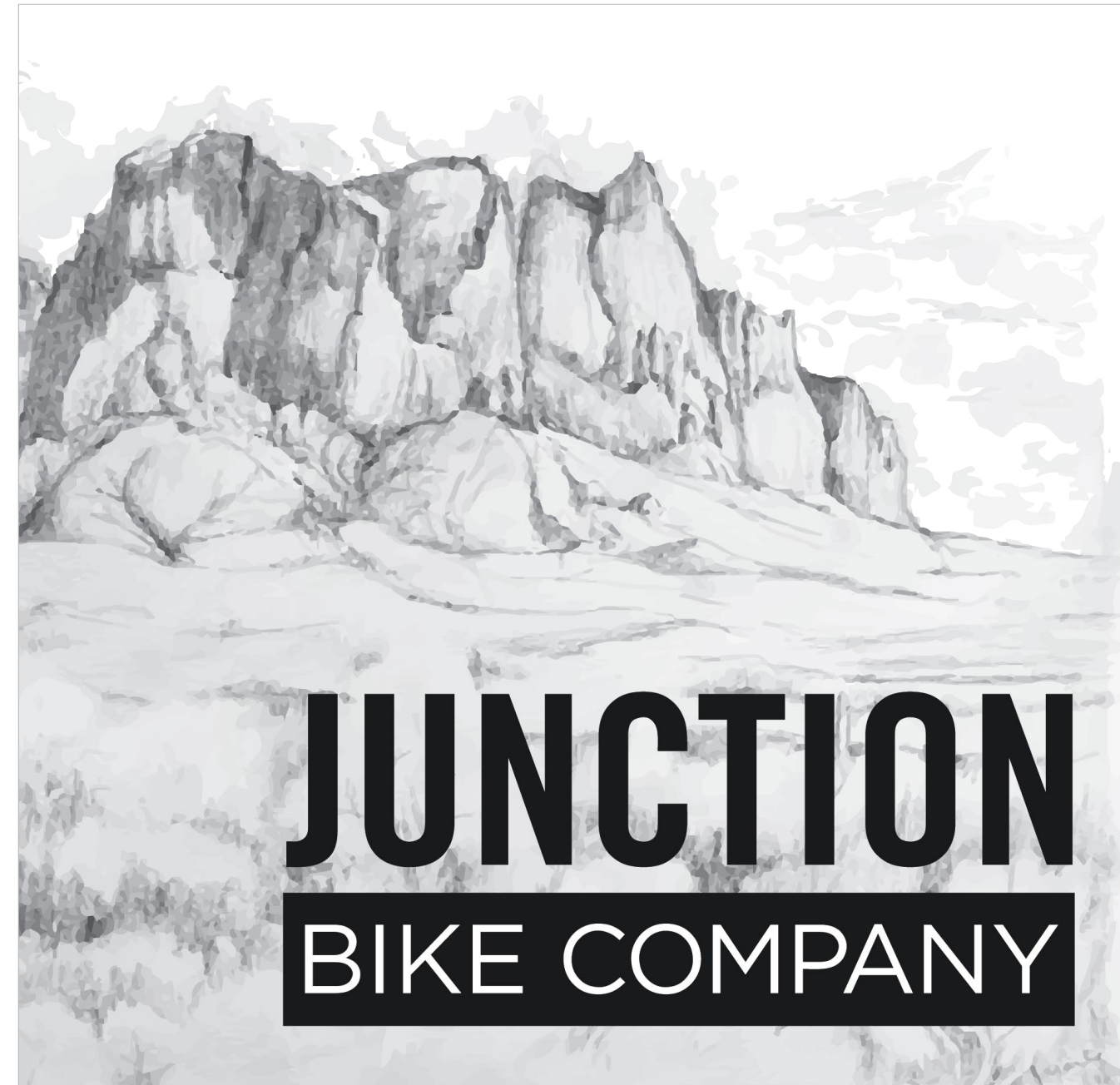


# Social Issue: Racial Bias in Marijuana Arrests

## Senior Capstone: Book, Exhibit, & Clock Design

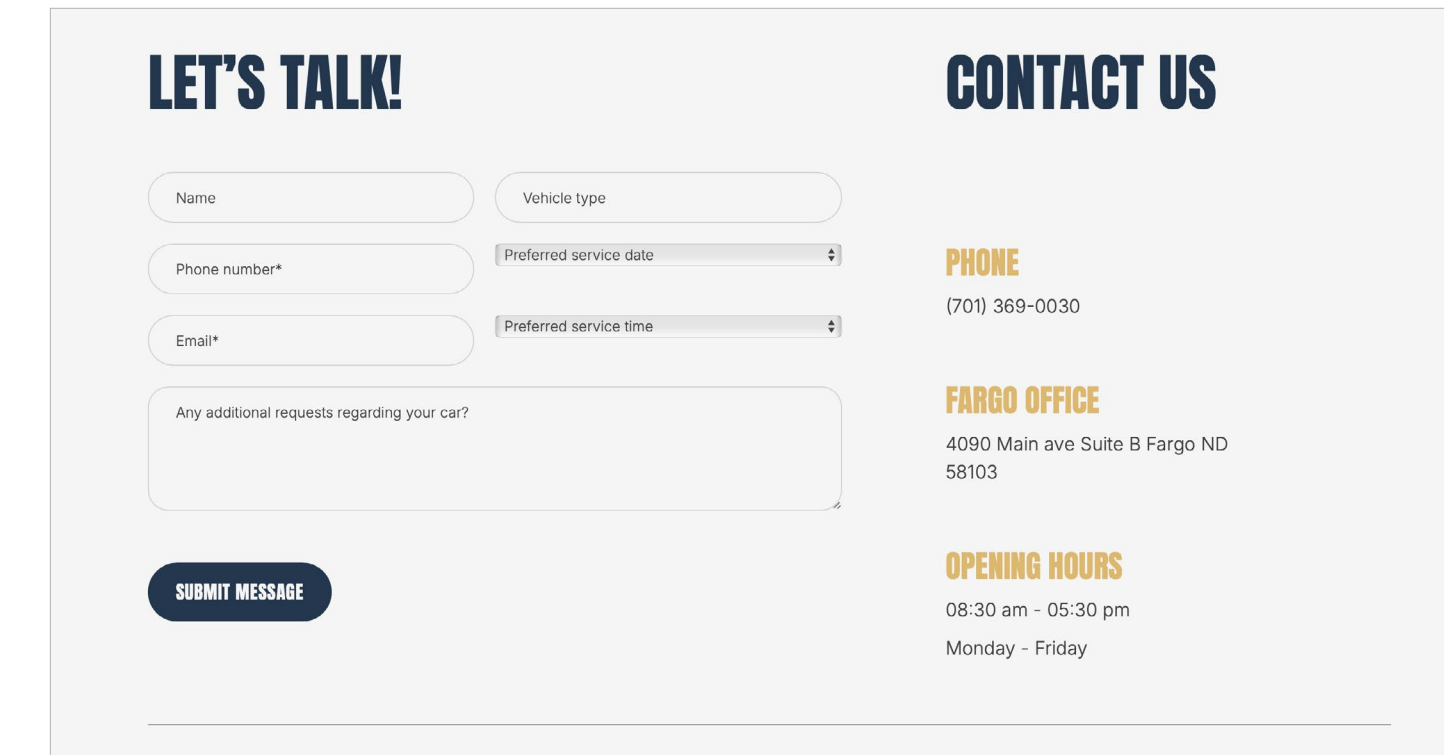
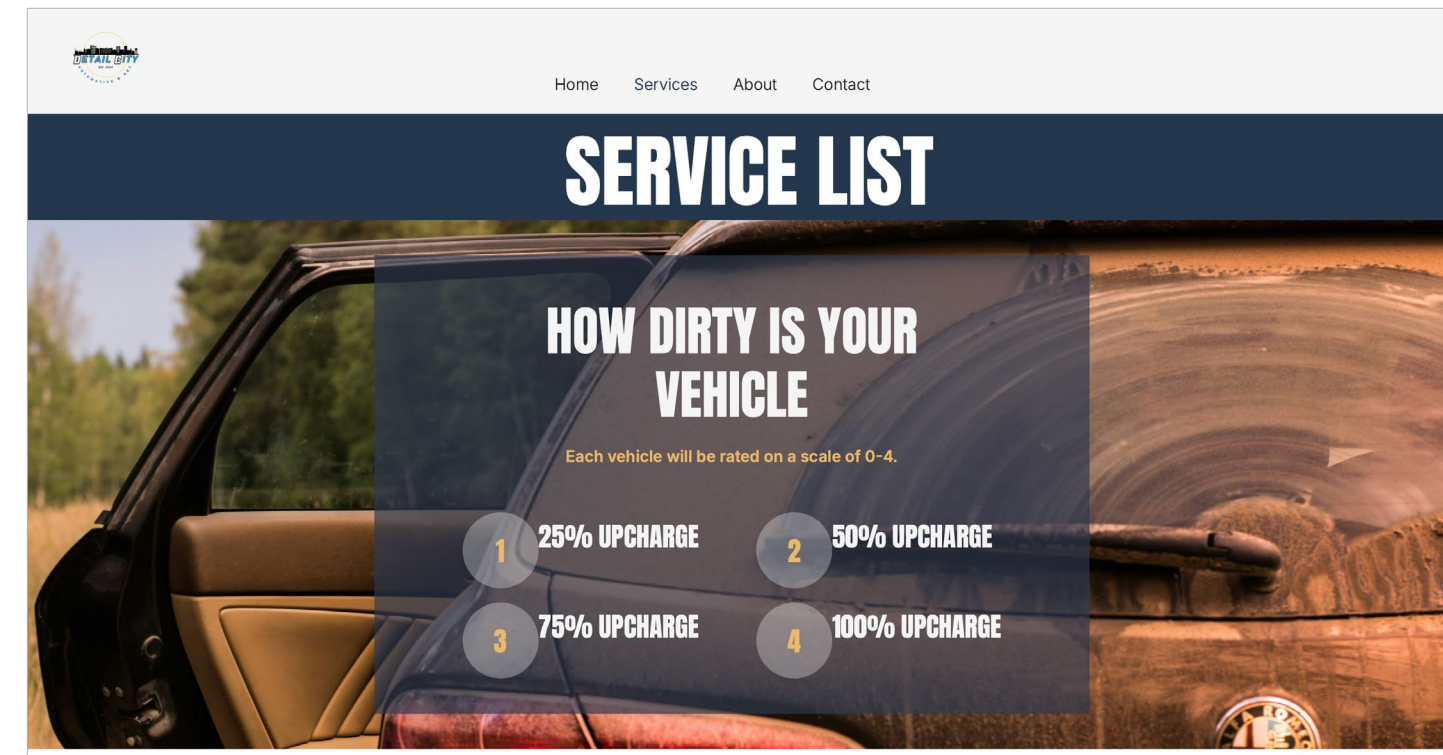
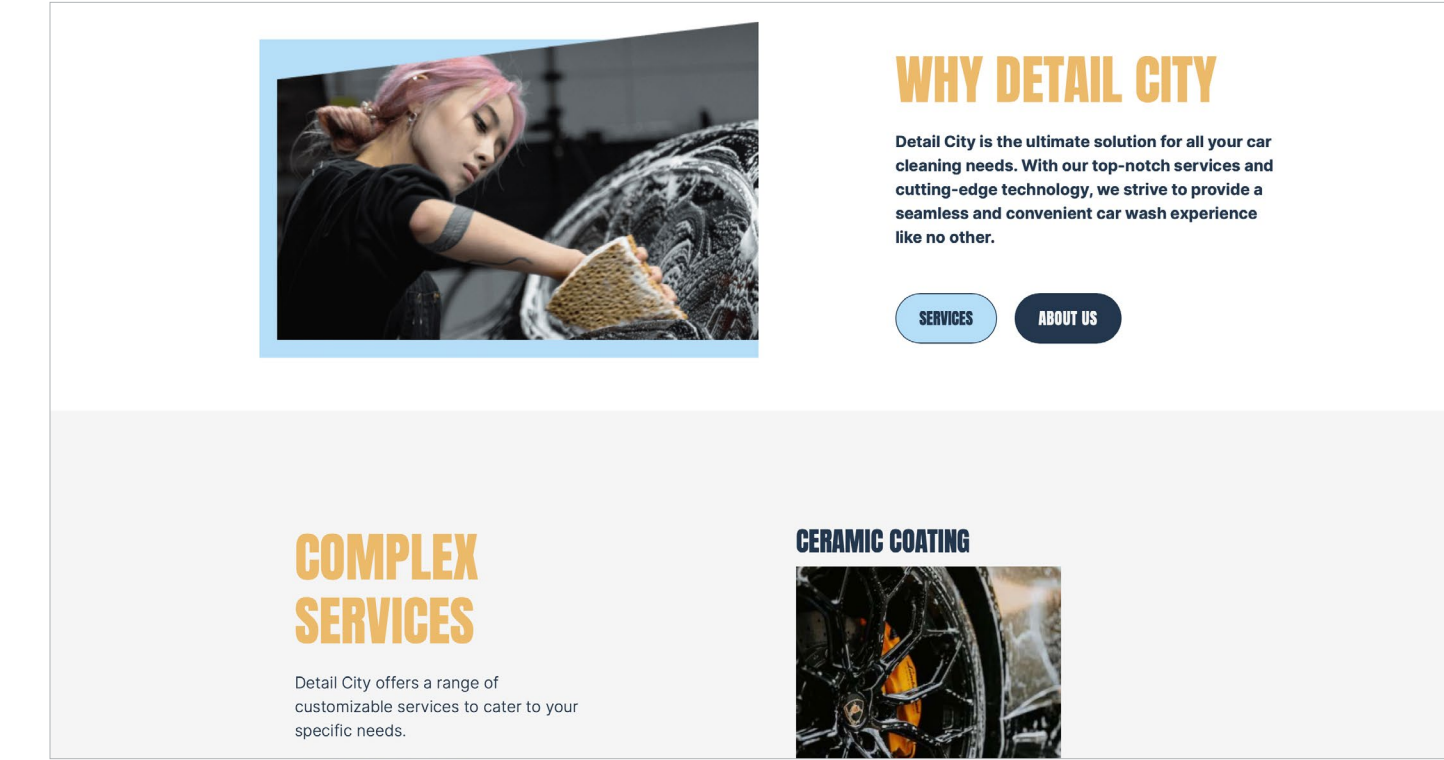
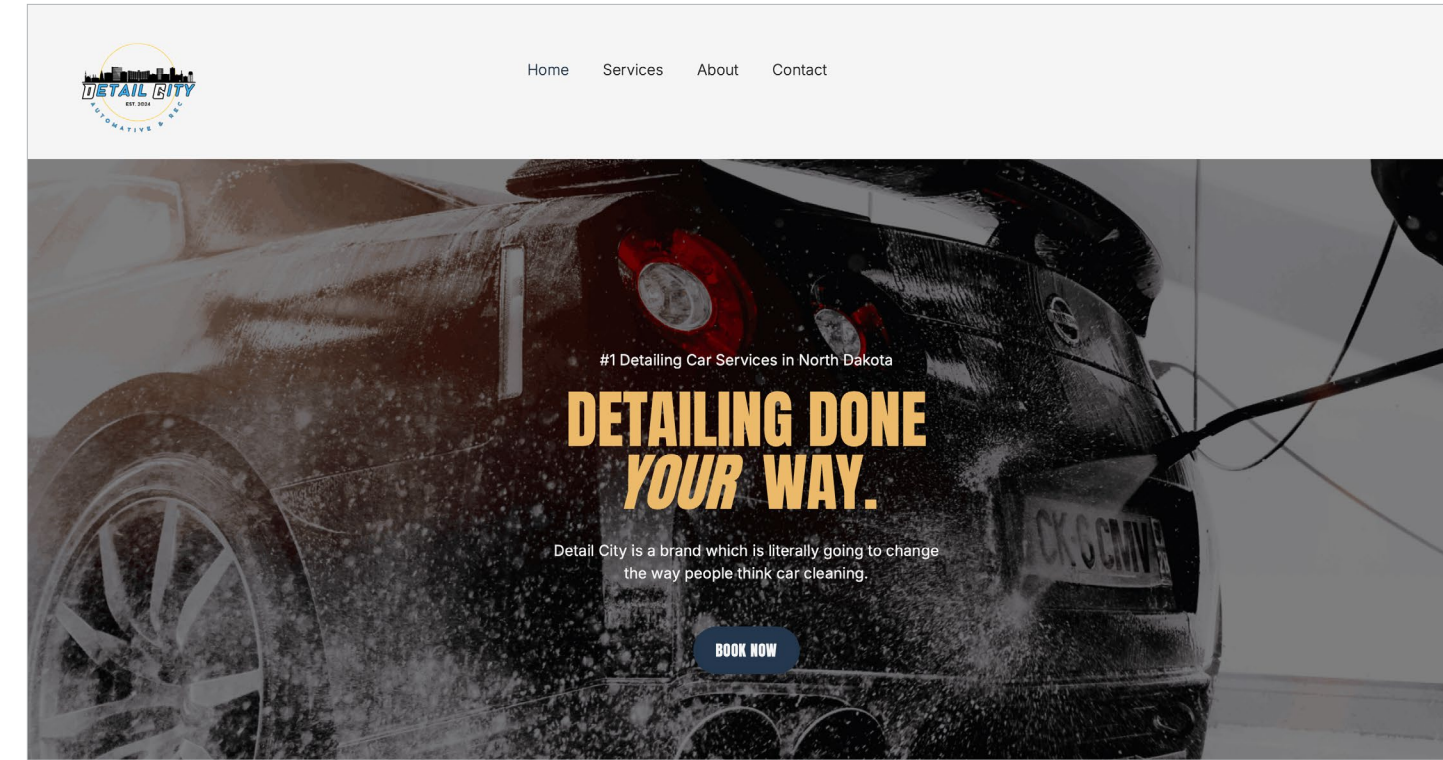


**Junction Bike Company**  
*Superstition Mountain Addition*



**Misc. Design**

Detail City  
Website Design & Development  
https://www.detail-city.com



### Jolly Cannabis Creative Direction & Content Creation



**M** Remarkable! ★★★★★  
The best tasting gummies I've ever had!!  
Irontdale, AL

**A** Wonderful! ★★★★★  
Great flavor... hands down my favorite one!  
Georgetown, TX

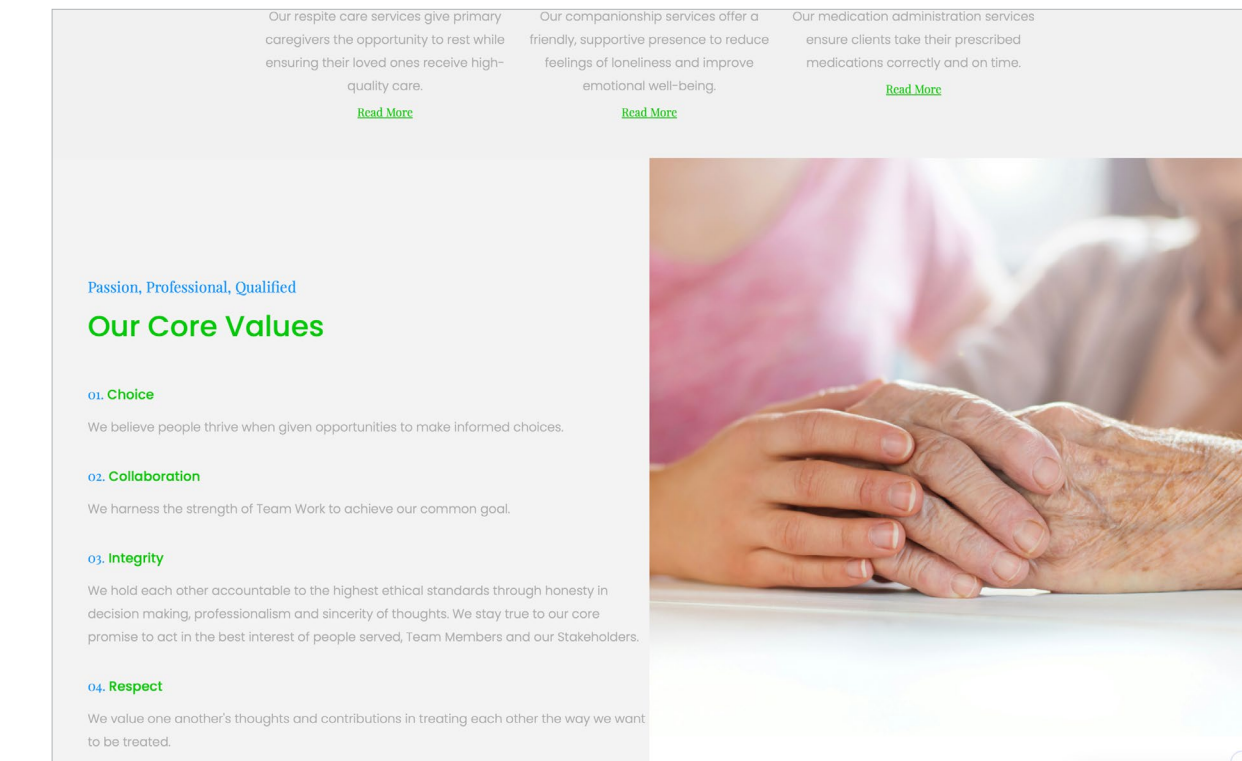
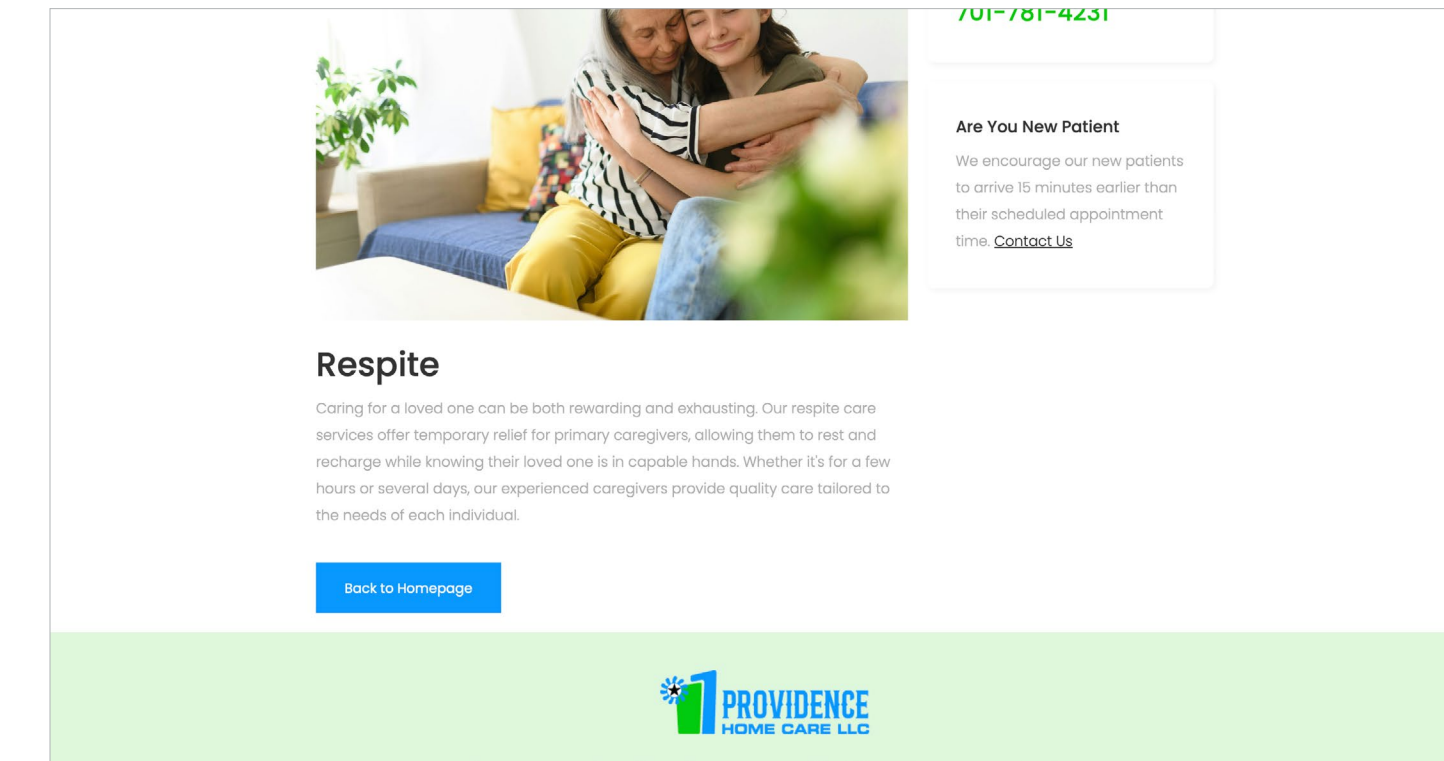
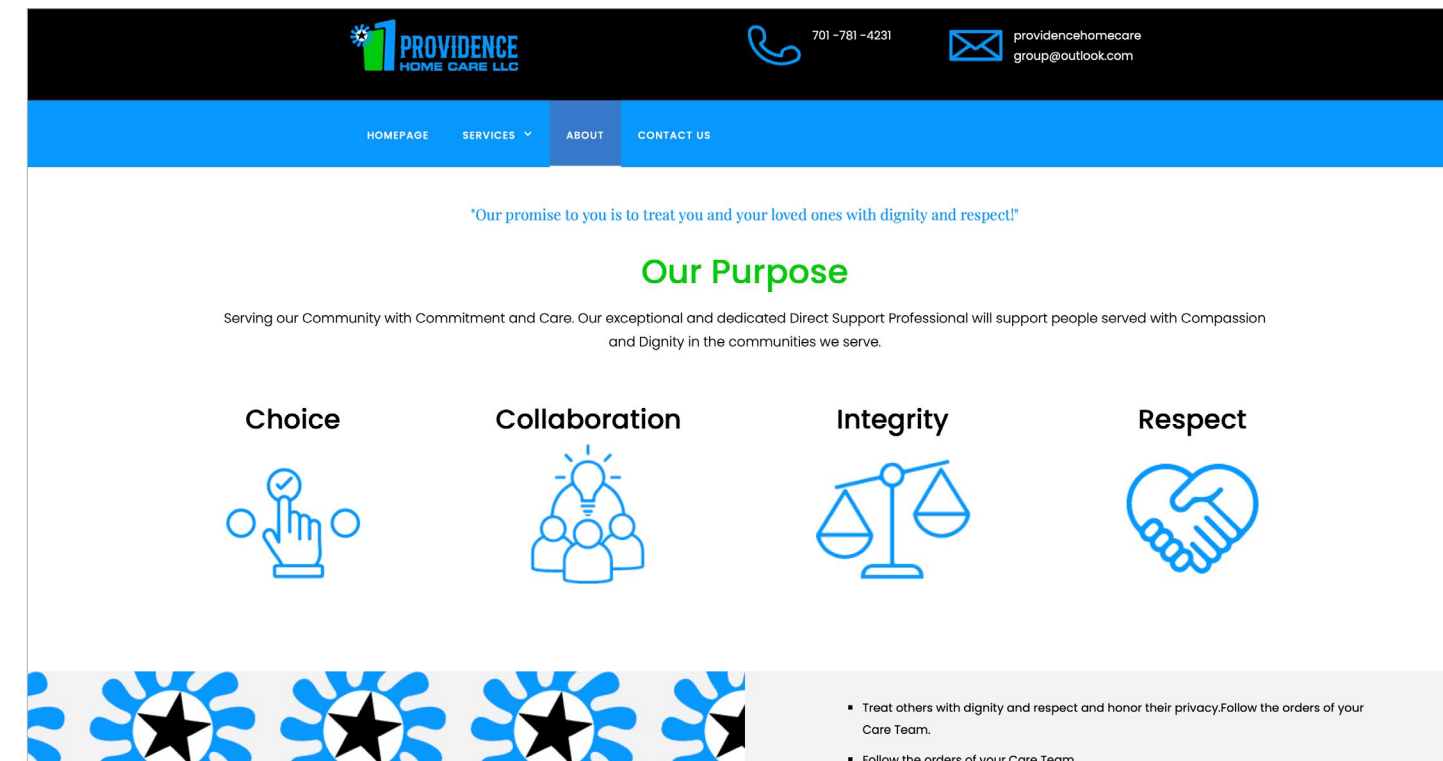
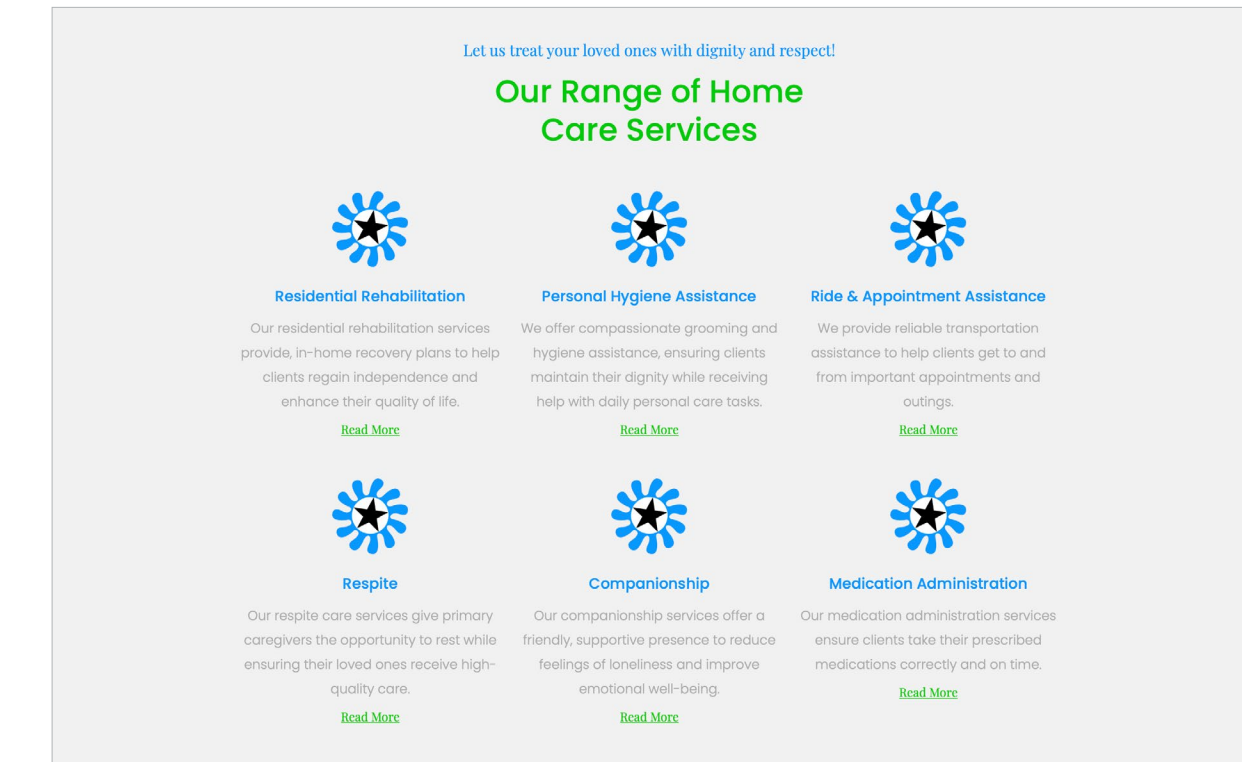
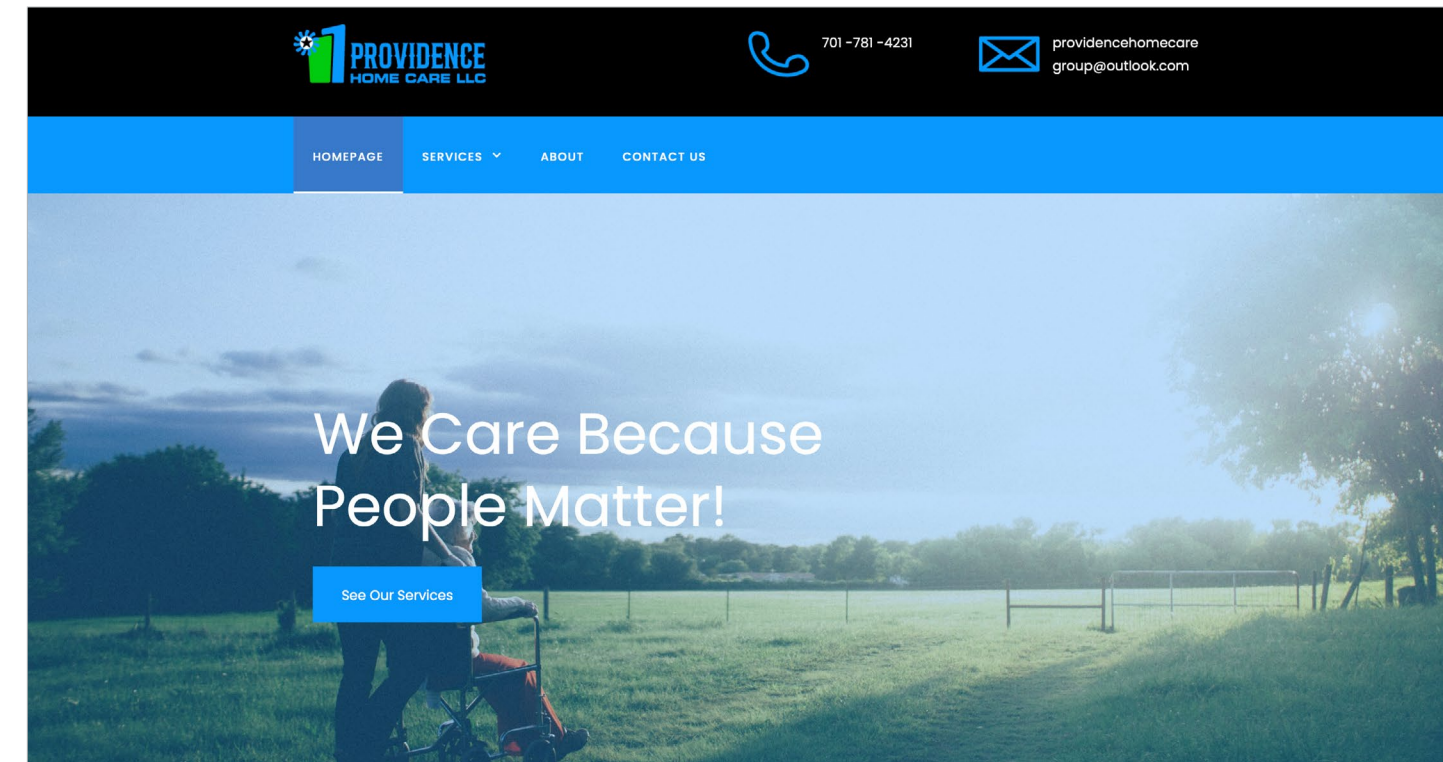
**J** LOVE! ★★★★★  
Highly recommended!  
Ancworth, GA

**S** Incredible! ★★★★★  
I love the flavor and it works perfectly for me and was delivered in a timely manner!  
Ankeny, IA

**M** So Good! ★★★★★  
Really loved it!  
Peachtree City, GA

# Providence Home Health Care Website Design & Development

https://providence-homecare-llc.webflow.io



# Layout Design

**JOLLY HAPPY NEW YEAR**

Ring in the New Year  
on a **high** note!

EXPLORE MORE

NEW DISPOSABLE DESIGNS!

Here's to a highly exciting New Year—  
may your 2025 be rolled with peace,  
packed with joy, and lit with good vibes!  
From all of us at Team Jolly, stay elevated  
and keep it green—let's make this year  
jointly amazing!

Something for everybody!

1:1 THC:CBD

Find your high,  
in perfect harmony

Here's to a highly exciting New Year—  
may your 2025 be rolled with peace,  
packed with joy, and lit with good vibes!  
From all of us at Team Jolly, stay elevated  
and keep it green—let's make this year  
jointly amazing!

Something for everybody!

1:1 THC:CBD

Find your high,  
in perfect harmony

0% THC

1:25 THC:CBD

JOLLY CONES, CBD  
PRE-ROLLS & FLOWER

SEE RATIOS

**Happy Valentine's Day**

15% OFF

GRAB YOURS

Roses are sweet, but brownies and gummies  
are sweeter! 🍷 Treat your Valentine  
(or yourself) to our Brownie + Strawberry  
Watermelon Bundle. Love tastes Jolly this year!

SHOP BUNDLE

JOLLY

**BE MINE + SPREAD JOLLY**

JOLLY

**Be Mine &**

**Pass the Jolly**

Cupid called, and he said to treat yourself to Jolly  
this Valentine's. Self-love is the best love! Treat  
yourself to being High on love, life—and Jolly! 🍷

OUR SPRINKLE BROWNIES

SHOP BROWNIES

**Dreamy Nights Await**

This Valentine's Day, give the gift of  
restful nights with our new  
Elderberry Sleep Gummies. Sweet  
dreams, guaranteed!

SLEEP GUMMIES

**JOLLY HAPPY BLACK HISTORY MONTH!**

Celebrate with products  
that inspire creativity and  
uplift your vibe!

shop now

This month, we celebrate the legacy of

**SLEEP WELL** **JOLLY**

**NEW**



**JOLLY ELDERBERRY NIGHTTIME GUMMIES**  
5 mg CBN 50 mg CBD  
+ L-Theanine + Chamomile + Elderberry  
HEMP DERIVED GUMMIES

**THC FREE**

**NIGHTTIME ELDERBERRY GUMMIES**

**SHOP NOW**

\$34.99 per pouch

- Lab Tested
- Vegan
- Real Fruit
- No Synthetic Colors or Flavors
- Gluten Free

**Cannabinoids**  
Cannabinoids CBD and CBN support sleep by helping to relax the mind and body, aiding in falling and staying asleep.

**L-Theanine**  
L-theanine is an amino acid that relaxes and reduces stress, supporting focus and better sleep.

**Natural Extracts**  
Elderberry and chamomile extracts naturally support immune health and promote relaxation.

**JOLLY**

**SELF CARE MATTERS**  
**REST EASY...**

Drift into restful sleep with our elderberry chamomile nighttime gummies, crafted to promote relaxation and support your body's natural sleep cycle.

**SHOP NOW**

**5mg CBN**  
CBN: aids in sleep, pain relief, & Neuroprotective properties

**50mg CBD**  
CBD: helps with insomnia, chronic pain, & addiction

**15 GUMMIES PER POUCH**



Get ready to snooze with Jolly! 🌙 We're excited to help you prioritize your well-being with our newest Elderberry Nighttime Sleep Gummies.

**JOLLY**

**JOLLY Sili Cap**

**COME SEE US**  
**JOLLY X SILI CAP**  
**BOOTH 4211**  
**AT VEGAS CHAMPS**  
**FEB 12TH - 15TH**  
**CBD DOG TREATS**



**SPACE BLEND SILI CAP**



**NIGHTTIME GUMMIES**



**11AM - 6PM**  
**LAS VEGAS CONVENTION CENTER**  
**3150 PARADISE ROAD**  
**LAS VEGAS, NV 89109**

@JOLLY-CANNABIS  
[www.jolly-cannabis.com](http://www.jolly-cannabis.com)

**JOLLY**

**2025**  
**PRODUCT CATALOG**



# Providence Home Care Tri-Fold Brochure Design

**CLIENTS RIGHTS**  
PHC will assure our clients are informed in the areas of:

- Be informed of your rights and responsibilities
- Receive the services that best meet your needs and support you to do things on your own to the best of your abilities in a least restrictive setting.
- Receive explanation of services provided by Providence Home Care, LLC, and other agencies.
- Work with you and your team to make decisions that are import to you.
- Personal information will be shared on a need to know basis. HIPPA compliant.
- Contact your guardian, family members, friends, DD Program Manager, and / or Human Rights Committee.

**OUR PURPOSE**  
Serving our Community with Commitment and Care. Our exceptional and dedicated Direct Support Professionals will support people served with Compassion and Dignity in the communities we serve.

**SERVICE COMMITMENT**  
Providence Home Care, LLC affirms that individuals applying for and receiving services and assistance through any of our programs will be afforded due process and will NOT be denied services or assistance based on the basis of race, color, sex, age, religion, national origin and will follow all applicable laws.

PHC provides the necessary guarantees and commitments in the design and implementation of its programs by adapting the unique abilities of and needs of each personserved (i.e.: visual, auditory, linguistics, and motor abilities.) through partnership with North Dakota Assistive (Formerly IPAT).

701-781-4231  
providencehomecaregroup@outlook.com  
providence-hc.com

**we care because people matter!**

**CLIENTS RESPONSIBILITIES**  
As a client of Providence Home Care, LLC, you have the following responsibilities.

- Treat others with dignity and respect and honor their privacy.
- Follow the orders of your Care Team.
- Sign a release of information for what can be shared and with whom it can be shared with.
- Ask your staff to help you practice your religion / spirituality.
- See that your activities do not hurt yourself or someone else, and do not violate someone else's rights.
- Follow the law and act in a safe manner and communicate appropriately.
- Make safe and healthy decisions about you life.
- Tell someone you trust if you are being abused/neglected/exploited and mistreated.
- Tell the truth about situations where you believe your rights have been violated.
- Pay your bills and live within your financial means, budgeting for necessities before spending money on non-essentials.

**Our Core Values**  
**Choice:** We believe people thrive when given opportunities to make informed choices.  
**Collaboration:** We harness the strength of Team Work to achieve our common goal.  
**Integrity:** We hold each other accountable to the highest ethical standards through honesty in decision making, professionalism and sincerity of thoughts. We stay true to our core promise to act in the best interest of people served, Team Members and Stakeholders.  
**Respect:** We value one another's thoughts and contributions in treating each other the way we want to be treated.

**"Our Promise to you is to treat you and your loved ones with dignity and respect."**

**PHC HAS BEEN ACCREDITED BY THE COUNCIL ON QUALITY LEADERSHIP (CQL)**  
TO DELIVER PERSON-CENTERED SUPPORT IN OUR COMMUNITIES

**Reporting Procedure**  
If you feel like you are not being heard. Please contact the CEO via email or phone number below:  
701.781.4231  
providencehomecaregroup@outlook.com  
Providence Home Care, LLC is an Equal Opportunity Employer.

**Our Services Include:**

- Residential Rehabilitation
- Respite
- Companionship
- Ride & Appointment Assistance
- Day Rehabilitation
- Medication Administration
- Family Support Services
- Personal Hygiene Assistance
- Grooming Assistance

**we care because people matter!**

**CLIENTS RIGHTS**  
PHC will assure our clients are informed in the areas of:

- Be informed of your rights and responsibilities
- Receive the services that best meet your needs and support you to do things on your own to the best of your abilities in a least restrictive setting.
- Receive explanation of services provided by Providence Home Care, LLC, and other agencies.
- Work with you and your team to make decisions that are import to you.
- Personal information will be shared on a need to know basis. HIPPA compliant.
- Contact your guardian, family members, friends, DD Program Manager, and / or Human Rights Committee.

**OUR PURPOSE**  
Serving our Community with Commitment and Care. Our exceptional and dedicated Direct Support Professionals will support people served with Compassion and Dignity in the communities we serve.

**SERVICE COMMITMENT**  
Providence Home Care, LLC affirms that individuals applying for and receiving services and assistance through any of our programs will be afforded due process and will NOT be denied services or assistance based on the basis of race, color, sex, age, religion, national origin and will follow all applicable laws.

PHC provides the necessary guarantees and commitments in the design and implementation of its programs by adapting the unique abilities of and needs of each personserved (i.e.: visual, auditory, linguistics, and motor abilities.) through partnership with North Dakota Assistive (Formerly IPAT).

**CLIENTS RESPONSIBILITIES**  
As a client of Providence Home Care, L.L.C, you have the following responsibilities.

- Treat others with dignity and respect and honor their privacy.
- Follow the orders of your Care Team.
- Sign a release of information for what can be shared and with whom it can be shared with.
- Ask your staff to help you practice your religion / spirituality.
- See that your activities do not hurt yourself or someone else's rights.
- Follow the law and act in a safe manner and communicate appropriately.
- Make safe and healthy decisions about you life.
- Tell someone you trust if you are being abused/neglected/exploited and mistreated.
- Tell the truth about situations where you believe your rights have been violated.
- Pay your bills and live within your financial means, budgeting for necessities before spending money on non-essentials.

**Our Core Values**  
**Choice:** We believe people thrive when given opportunities to make informed choices.  
**Collaboration:** We harness the strength of Team Work to achieve our common goal.  
**Integrity:** We hold each other accountable to the highest ethical standards through honesty in decision making, professionalism and sincerity of thoughts. We stay true to our core promise to act in the best interest of people served, Team Members and Stakeholders.  
**Respect:** We value one another's thoughts and contributions in treating each other the way we want to be treated.

**"Our Promise to you is to treat you and your loved ones with dignity and respect."**

**PHC HAS BEEN ACCREDITED BY THE COUNCIL ON QUALITY LEADERSHIP (CQL)**  
TO DELIVER PERSON-CENTERED SUPPORT IN OUR COMMUNITIES

**Reporting Procedure**  
If you feel like you are not being heard. Please contact the CEO via email or phone number below:  
701.781.4231  
providencehomecaregroup@outlook.com  
Providence Home Care, LLC is an Equal Opportunity Employer.

**Our Services Include:**

- Residential Rehabilitation
- Respite
- Companionship
- Ride & Appointment Assistance
- Day Rehabilitation
- Medication Administration
- Family Support Services
- Personal Hygiene Assistance
- Grooming Assistance

**we care because people matter!**





**thanks for inspecting**

view more at <https://cayldesign.com>

reach me at [cayldesigns@gmail.com](mailto:cayldesigns@gmail.com)